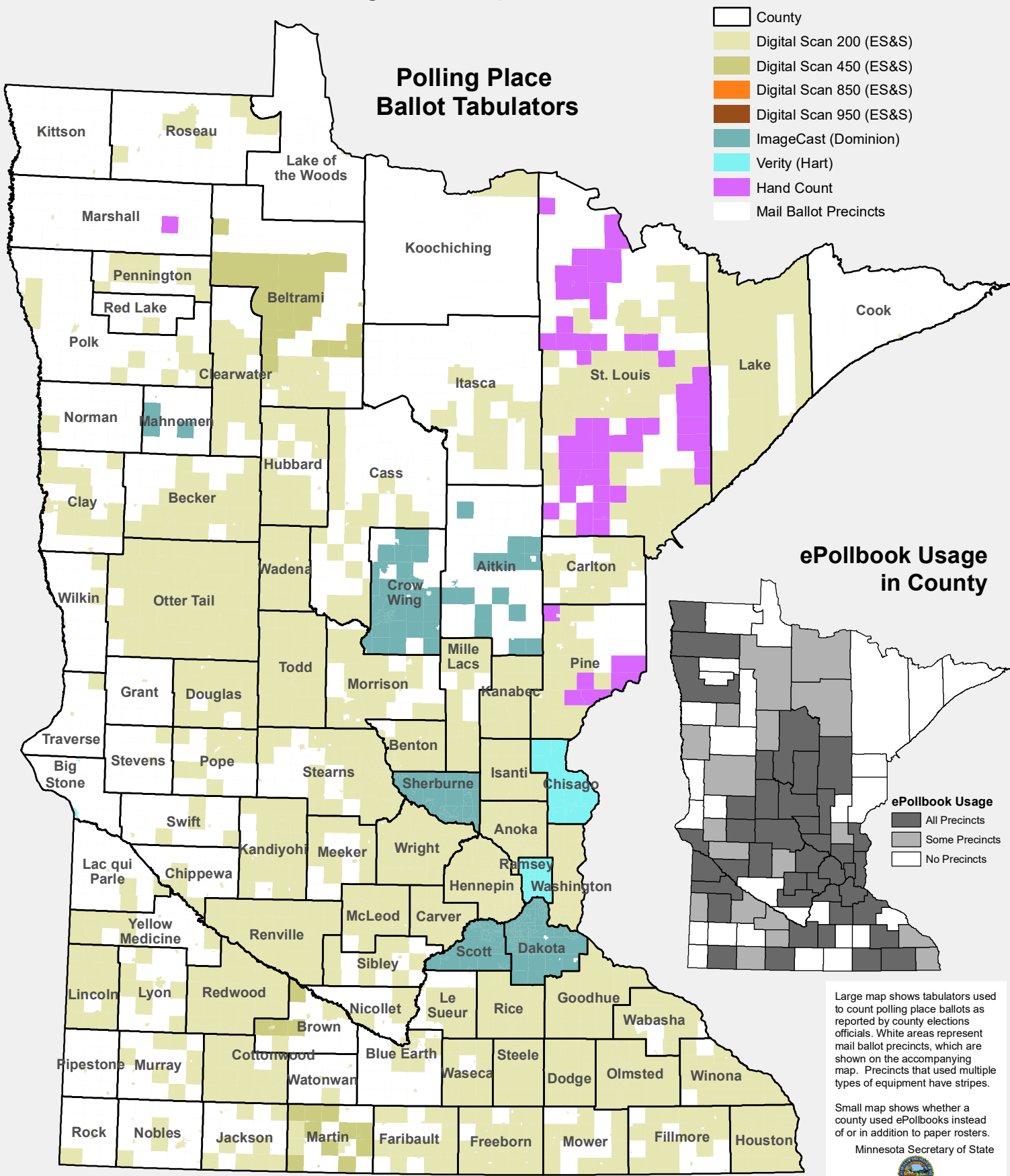


2022 General Election Equipment

Polling Place Optical Scan Tabulators and ePollbooks



Large map shows tabulators used to count polling place ballots as reported by county elections officials. White areas represent mail ballot precincts, which are shown on the accompanying map. Precincts that used multiple types of equipment have stripes.

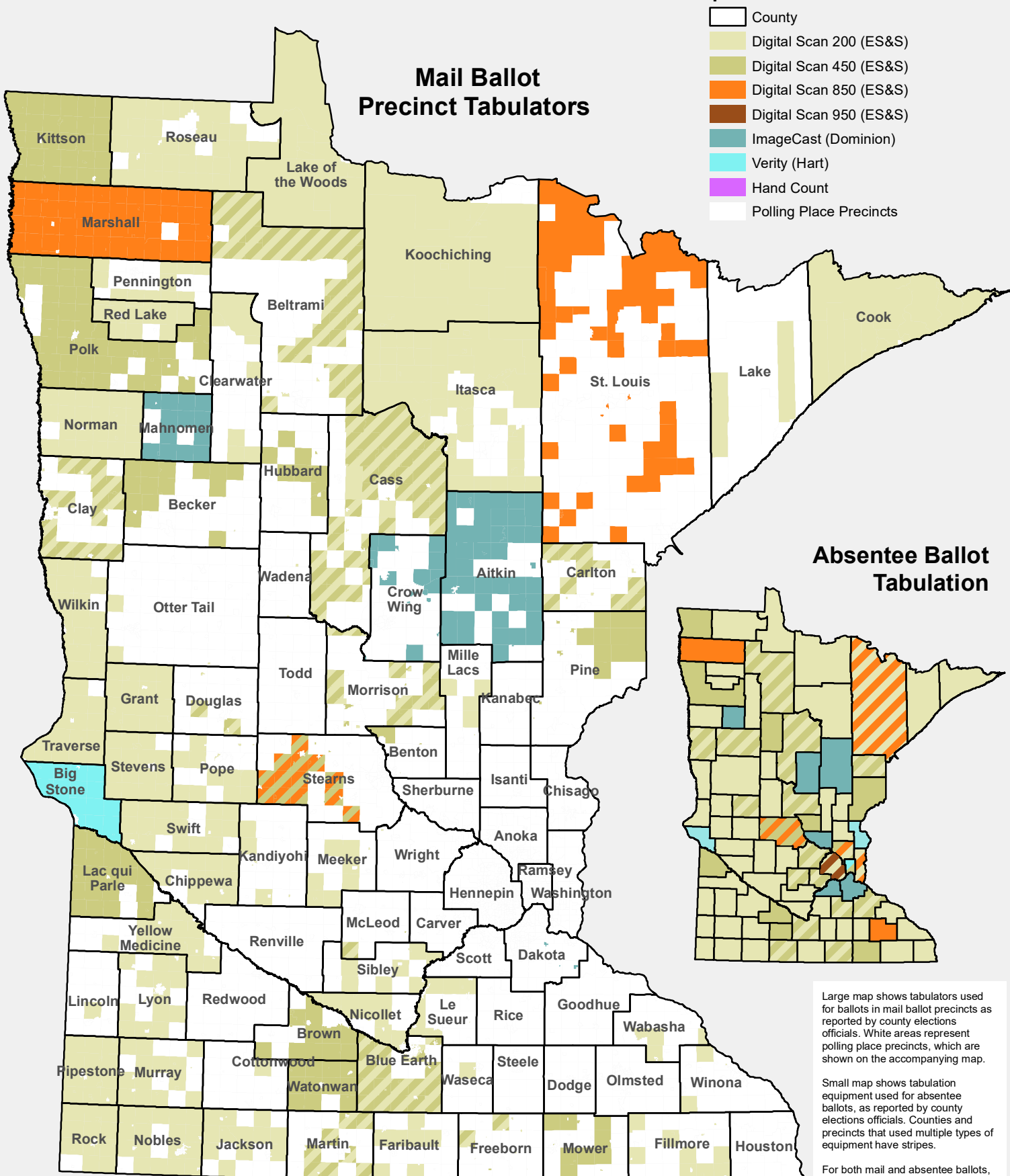
Small map shows whether a county used ePollbooks instead of or in addition to paper rosters.

Minnesota Secretary of State

Elections Division
March 2023

2022 General Election Equipment

Absentee and Mail Ballot Optical Scan Tabulators



Large map shows tabulators used for ballots in mail ballot precincts as reported by county elections officials. White areas represent polling place precincts, which are shown on the accompanying map.

Small map shows tabulation equipment used for absentee ballots, as reported by county elections officials. Counties and precincts that used multiple types of equipment have stripes.

For both mail and absentee ballots, as few as one piece of equipment may be used for all precincts in a county.