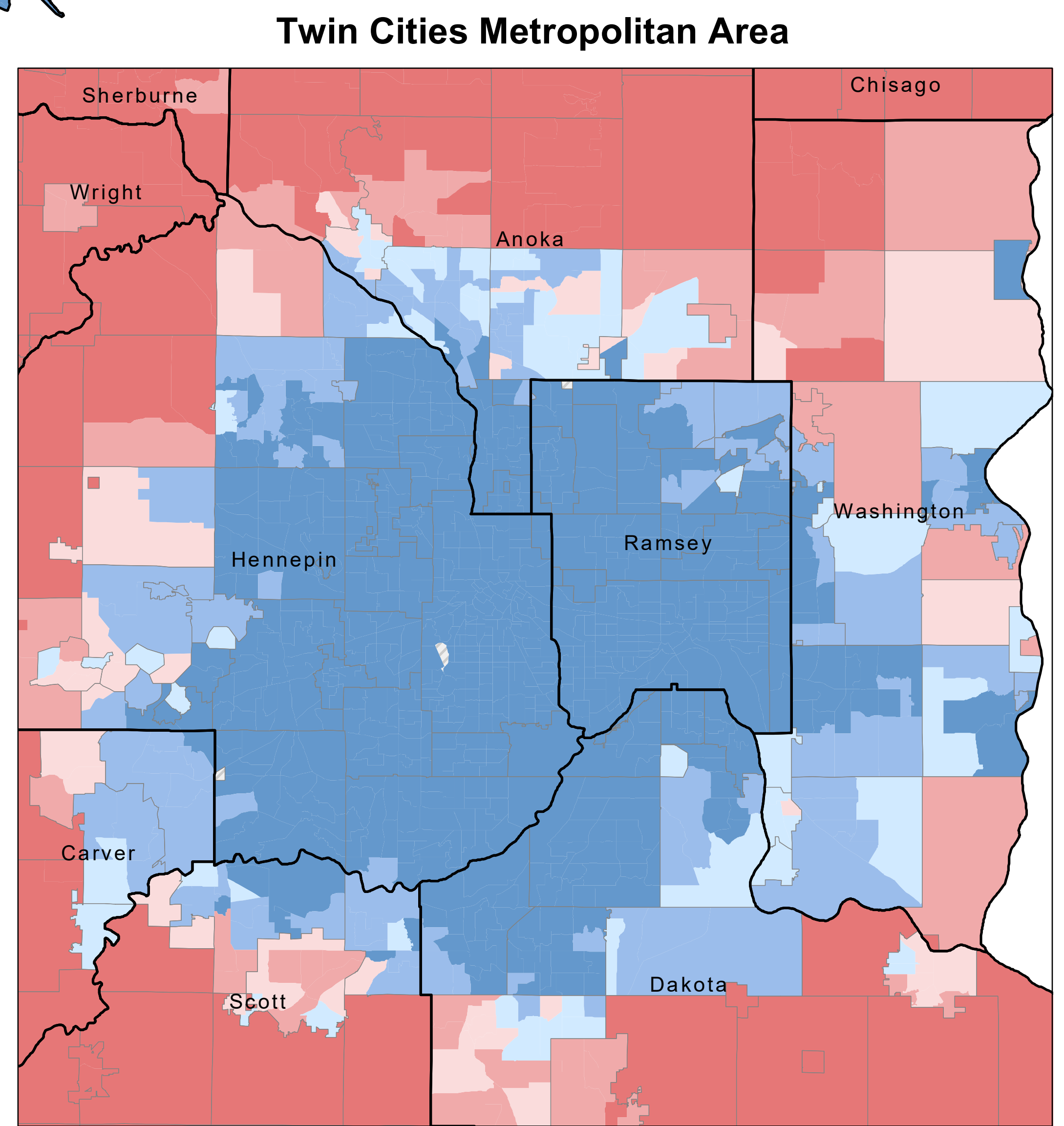
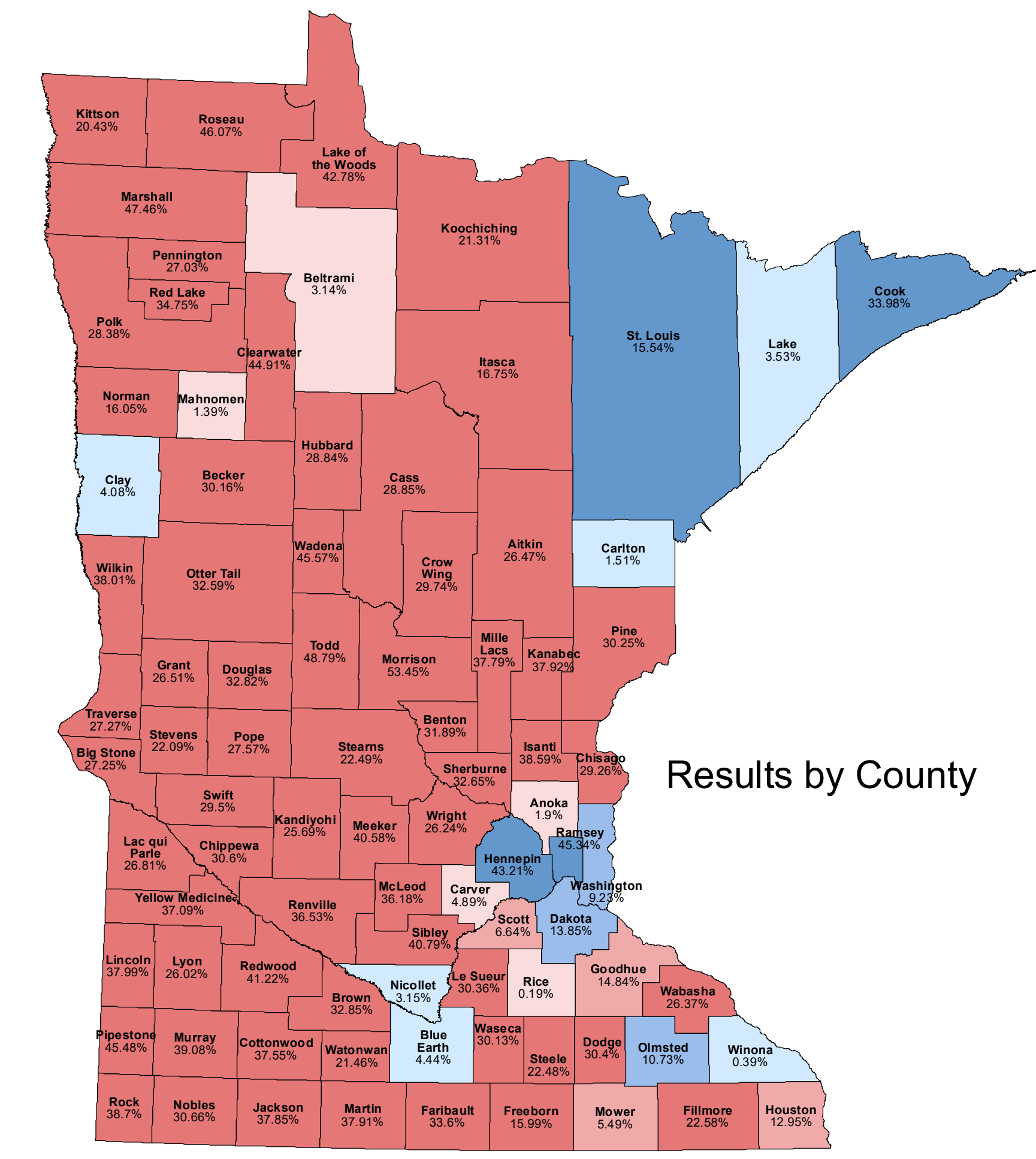
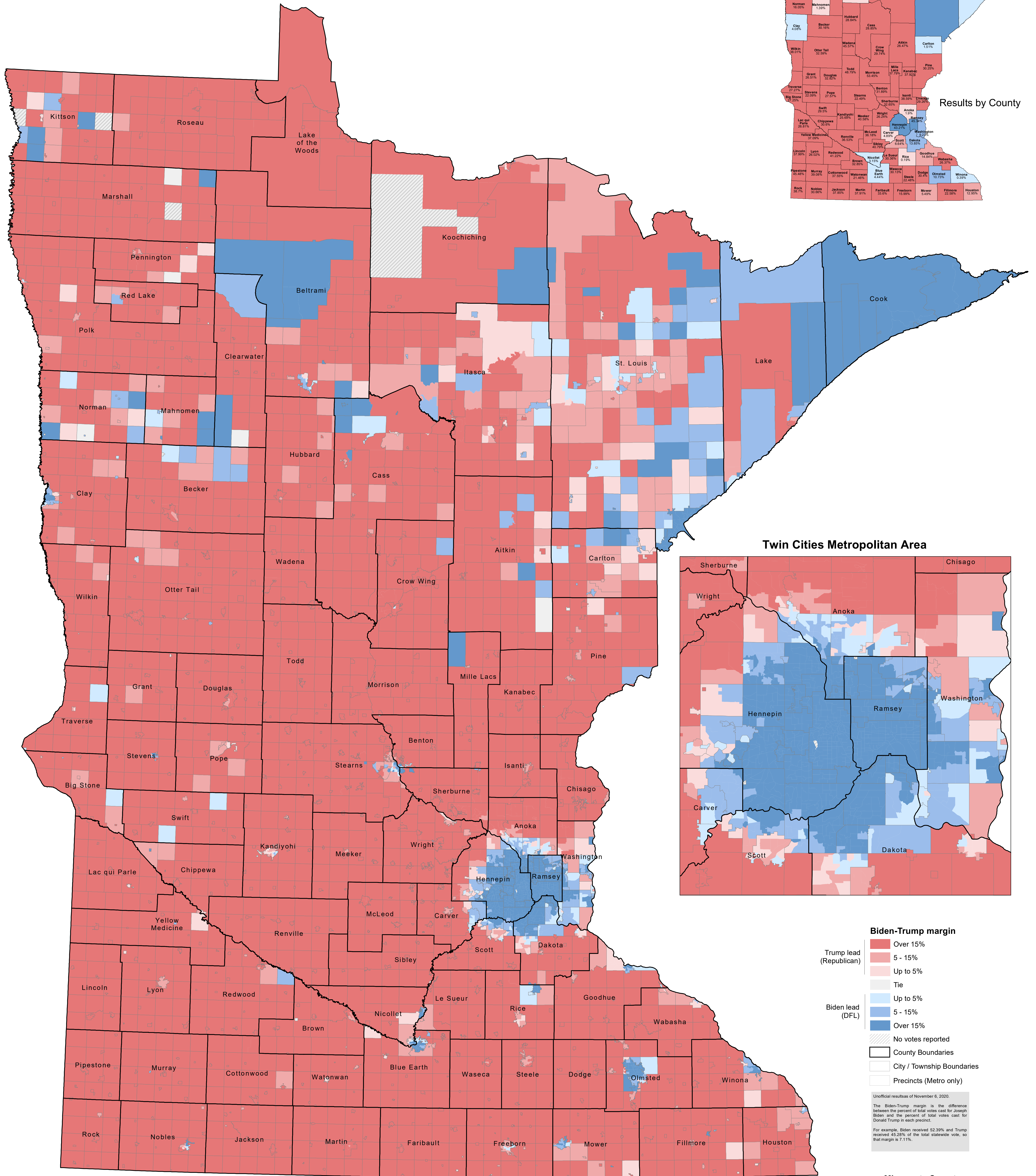


2020 General Election for U.S. President

Biden-Trump Margin by Precinct

Unofficial Results



Biden-Trump margin

- Over 15%
- 5 - 15%
- Up to 5%
- Tie
- Up to 5%
- 5 - 15%
- Over 15%
- No votes reported

County Boundaries
 City / Township Boundaries
 Precincts (Metro only)

Unofficial results of November 6, 2020.
 The Biden-Trump margin is the difference between the percent of total votes cast for Joseph Biden and the percent of total votes cast for Donald Trump in each precinct.
 For example, Biden received 52.39% and Trump received 45.28% of the total statewide vote, so that margin is 7.11%.