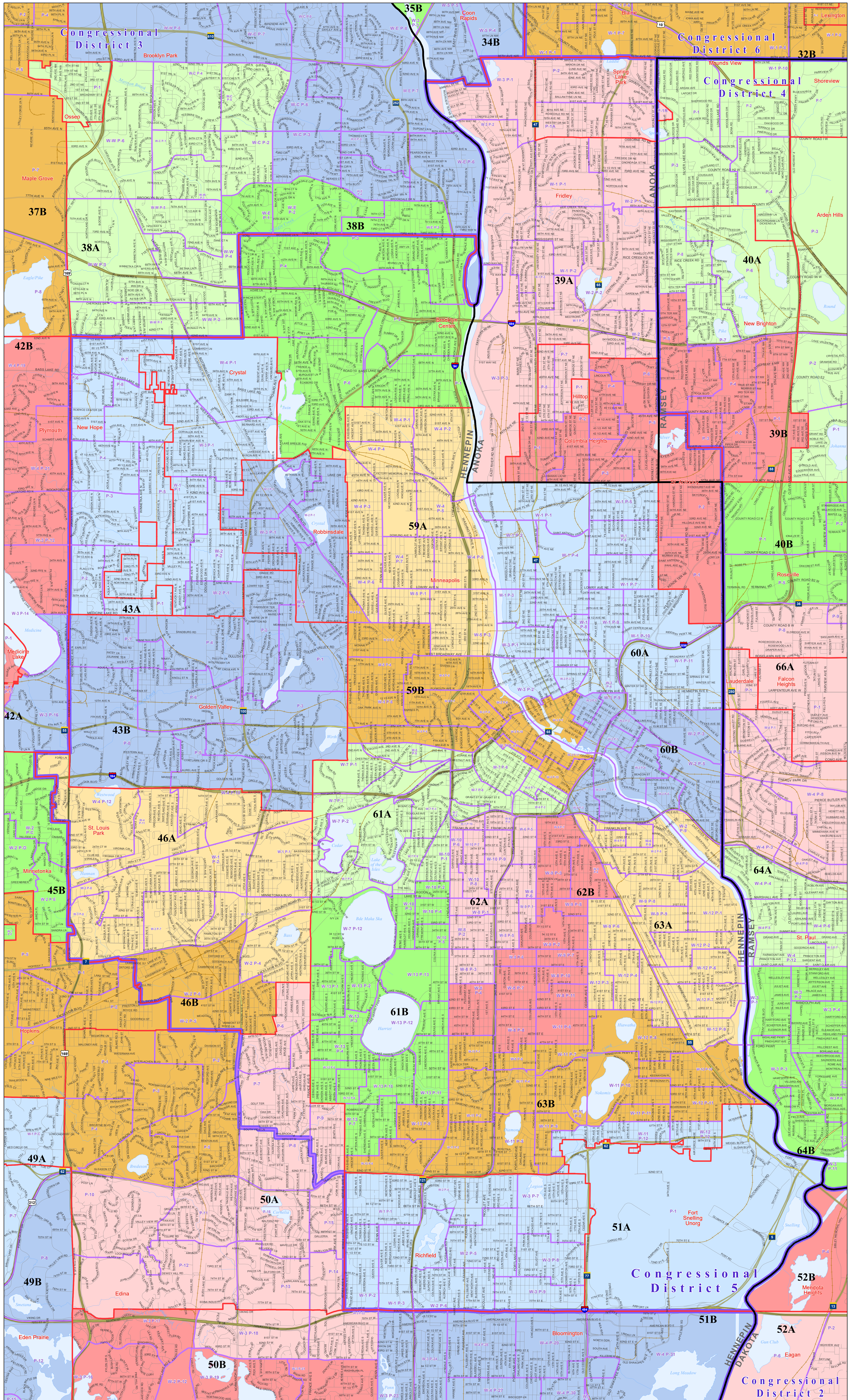
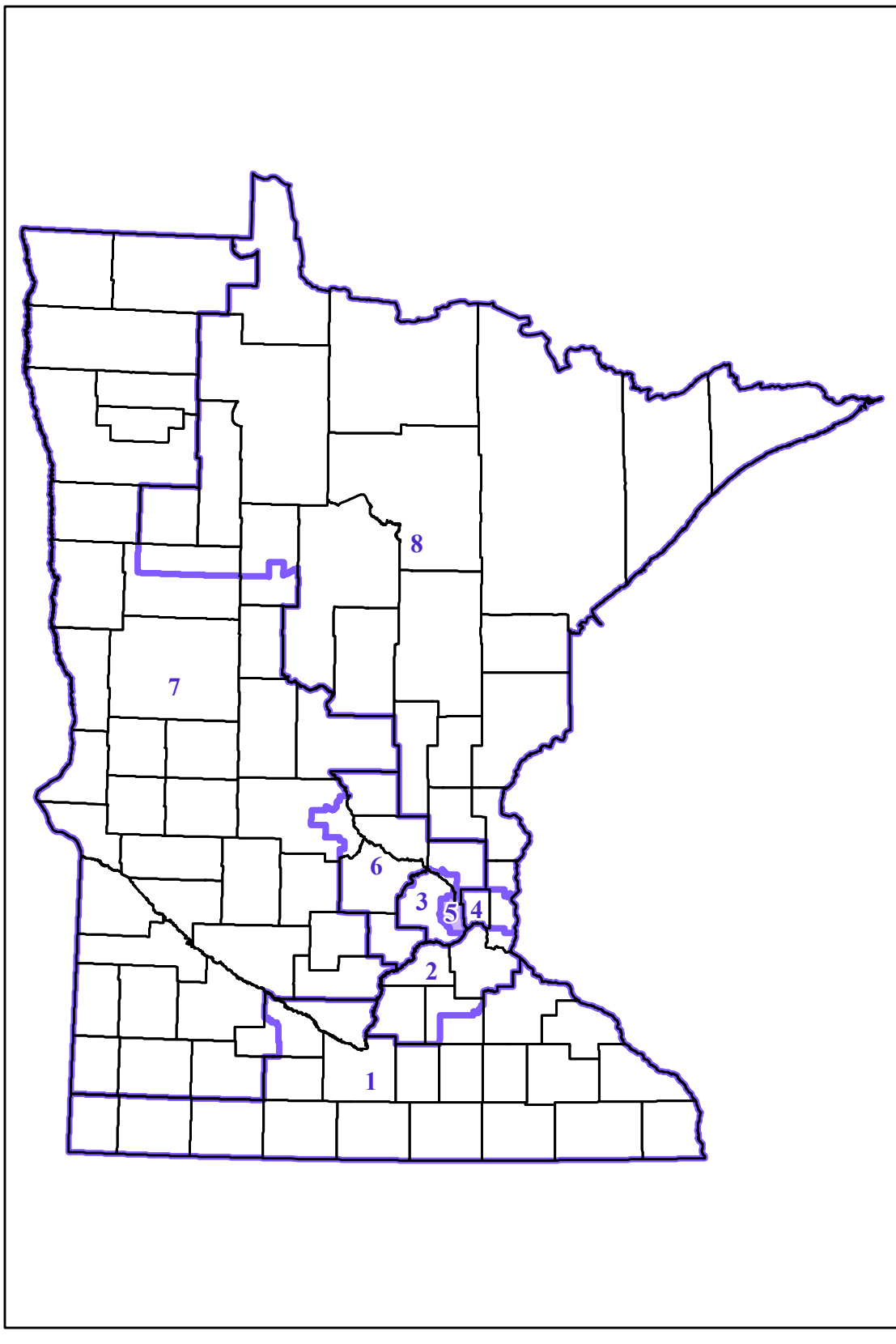
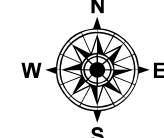


Minnesota's Fifth Congressional District



- C.D. 1 U.S. Congressional Districts
- 14B Shaded Regions Represent Legislative Districts
- CLAY County Boundaries
- EY City / Township Boundaries
- Lakes / Rivers
- Interstate Highways
- US Highways
- State Highways
- Streets
- Railroads



0 0.5 1 2 Miles

Minnesota Secretary of State



Elections Division
May 2024

This map shows the Congressional and Legislative Districts ordered by the Special Redistricting Panel in the matter of *Wattson, et al. v. Simon, et al.*, No. A21-0243 and A21-0346, on February 15, 2022, as modified by the legislature, corrected under Minnesota Statutes 2.91, subd. 2, or adjusted under Minnesota Statutes 204B.146, subd. 3. House districts that fall in the same Senate district use different shades of the same color. Only those municipalities with multiple precincts have precinct labels. Precinct boundaries are maintained by the Secretary of State, derived from McGeo and U.S. Census data. Precinct boundaries are current as of the date above, but visit the Polling Place Finder for definitive precinct and district information for a particular address: <https://pollfinder.sos.mn.gov> Precinct boundaries in unorganized territories are those established by county boards and may not align with the unorganized territory boundaries from McGeo and U.S. Census. Precinct data is available at the Minnesota Geospatial Commons: <https://gisdata.mn.gov>. Road data is from MNDOT and U.S. Census (Statewide) and NCompass (Metro). Water data is from MN DNR.